

XCKJ..LC

standardised industrial
limit switch for
heavy duty application.



The optimised choice for your process machinery

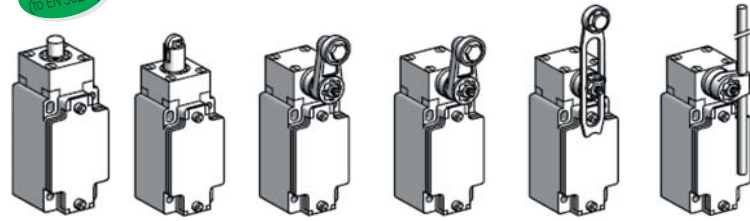
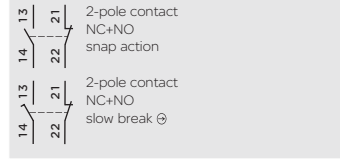
- Metal body with standard actuators ideal for Heavy duty application
- The most robust head in his category and fixed plug-in body
- Local availability of most comprehensive offer on the market

With a variety of heads and lever styles to choose as well as cable entry, OsiSense XCKJ..LC switches offer precision sensing for many industrial applications. The contact configuration choices include NO+NC snap action, as well as NO+NC slow break.

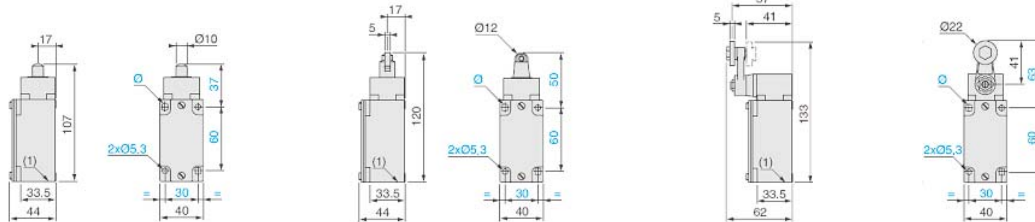
OsiSense XC



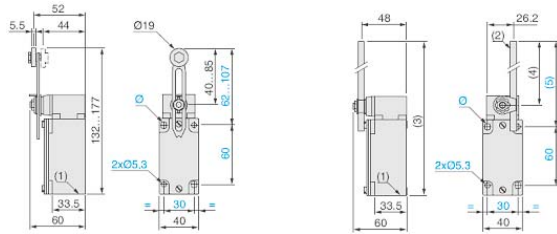
XCKJ



Type XCKJ metal, fixed body, conforming to standard EN 50041							
Type of operator		Metal end plunger	Steel roller plunger	Thermoplastic roller lever	Steel roller lever roller lever	Variable length thermoplastic	Polyamide Ø 6 mm rod lever L = 200 mm
Mechanical durability (millions of operating cycles)		10	10	10	10	10	10
Actuation speed (in m/s)		0.5	1	1.5	1.5	1.5	1.5
Product certification		CE - CCC					
Degree of protection		IP 66 conforming to IEC 60529; IK 07 conforming to EN 50102					
Rated operational characteristics		AC-15; A300 (Ue = 240 V, Ie = 3 A) / DC-13; Q300 (Ue = 250 V, Ie = 0.27 A)					
Cable entry (1)		1 tapped entry for ISO M20 x 1.5 or Pg 13.5 cable gland					
Fixing centres (mm)		30 x 60					
Body dimensions (mm) W x D x H		40 x 44 x 77					
Complete switch M20	2-pole NC+NO snap action	XCKJ161H29LC	XCKJ167H29LC	XCKJ10511H29LC	XCKJ10513H29LC	XCKJ10541H29LC	XCKJ10559H29LC
	2-pole NC+NO slow action	⊕ XCKJ561H29C	⊕ XCKJ567H29C	⊕ XCKJ50511H29C	⊕ XCKJ50513H29C	⊕ XCKJ50541H29C	⊕ XCKJ50559H29C
Complete switch Pg 13.5	2-pole NC+NO snap action	XCKJ161LC	XCKJ167LC	XCKJ10511LC	XCKJ10513LC	XCKJ10541LC	XCKJ10559LC
	2-pole NC+NO slow action	⊕ XCKJ561C	⊕ XCKJ567C	⊕ XCKJ50511C	⊕ XCKJ50513C	⊕ XCKJ50541C	⊕ XCKJ50559C
Dimension							
XCKJ161LC		XCKJ167LC		XCKJ1051LC		XCKJ1053LC	
⊕ XCKJ561C		⊕ XCKJ567C		⊕ XCKJ5051C		⊕ XCKJ5053C	
XCKJ161H29LC		XCKJ167H29LC		XCKJ1051H29LC		XCKJ1053H29LC	
⊕ XCKJ561H29C		⊕ XCKJ567H29C		⊕ XCKJ5051H29C		⊕ XCKJ5053H29C	



XCKJ10541LC	XCKJ10559LC
⊕ XCKJ50541C	⊕ XCKJ50559C
XCKJ10541H29LC	XCKJ10559H29LC
⊕ XCKJ50541H29C	⊕ XCKJ50559H29C



Other versions : please consult our customer Care Center



For more information visit our website at: www.schneider-electric.co.in
 Schneider Electric India Pvt. Ltd. (A 100% subsidiary of Schneider Electric Industries SAS)
 Corporate office : 9th Floor, DLF Building No.10, Tower C, DLF Cyber City, Phase II,
 Gurgaon - 122002, Haryana, Tel: 0124 3940400, Fax: 0124 4222036

Customer Care Centre : Toll-free numbers: 1800 180 1707, 1800 103 0011, General number: 0124 4222040
 Email: in-care@schneider-electric.com